

PLU: 593603

CODE: CK8953

Manufactured and packaged for  
SRGS PTY LTD

ABN 23 113 230 050

6 Coulthards Avenue, Strathpine,

QLD 4500, Australia

MADE IN CHINA

**4x4 ACCESSORIES**

# **+ 4WD CAMP KITCHEN**

## **Instruction Manual**



# + 4WD Camp Kitchen - PLU593603

Thank you for purchasing the XTM Camp Kitchen. The Camp Kitchen has three sections.



- + The top section of the slide is designed placement of your fridge/freezer. Using the four straps supplied, loop them through the oval holes at each end to hold the fridge firmly in place.



- + The second section of slide is for food preparation.



- + The third section of the slide is where you place your stove. Always make sure the wind shield is set up before turning on the stove. To set up the wind shield, you will need to release the wind shield from the bungee cord and clip into the lots provided.

**IMPORTANT:** Please make sure all 4 legs are fully extended and twist locked before placing stove on the slide. Always make sure the wind shield is set up before turning on the stove.



+ Support legs are underneath the third section of the slide.



+ Extend all 4 legs and twist locked.

You will need to fold and clip the wind shield back with the bungee cord before you close it.

**NOTE:** The maximum weight capacity for each section is 60kg.

## + Part List



### + Drawer Specifications

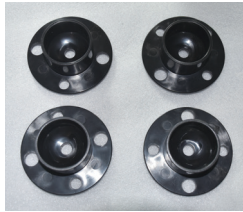
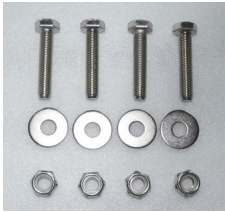
External size: L900 x W53.5 x H19cm

Net Weight: 29.6kg

Top section inner size: 86.5x49cm

Second section pull out length: 85cm

Third section pull out length : 76cm



### + Mounting Kit

4 x M10 x 55mm bolts

4 x M10 washers

4 x M10 nylon nuts

4 x base for support legs



### + Tie Down Kit

4 x nylon straps

## + Locating Mounting Space in Car



+ Before you put the camp kitchen inside the car. You will need first check the rear base of your car to locate the right position for the camp kitchen mounting.



+ You can use the seat anchor points to bolt the camp kitchen into your car. Check the distance between the seat mounting points and compare with the mounting rail at bottom of camp kitchen.



+ Move the mounting rail to adjust to right position.



+ Using the M10 bolts and nuts/washers provided in the mounting kit to attach to the underside of the camp kitchen. Pull out the slide to allow easy access the bottom mounting rail.